

# Mineral Drilling Annular Diverter



**Threaded  
Version**

## Mineral Drilling Annular Diverter:

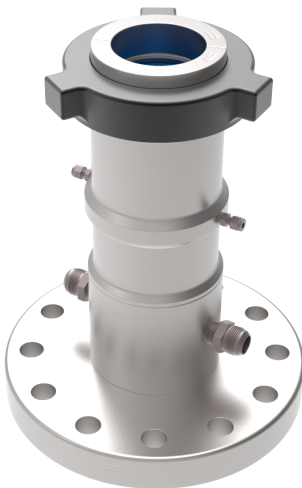
The IPI Packers Mineral Drilling Diverter system, is a compact inward inflating annular diverter specifically designed for mineral coring to suit N, H, P sizes. Different sizes are available on request for other applications. The compact and lightweight design enables use in surface operations as well as in underground situations, where space is a limiting factor. They can be mounted in any position to suit drill hole orientation. The design features quick change split wear guides that can be replaced with drill pipe in place. This system can also be used together with additional valving where borehole flow diversion while drilling is required.

## Applications:

- ◆ Surface and underground exploration drilling
- ◆ Geothermal drilling
- ◆ Water well drilling

## Benefits:

- ◆ Compact and lightweight size – suits manual handling in confined spaces
- ◆ Ability to change split guides with drill string in place
- ◆ May thread directly in N, H, P casing
- ◆ Low volume required to activate – suitable for hand pump or low volume accumulator
- ◆ Optional bushings for P size available to suit N & H sizes



**Flanged  
Version**

## Sizes\*:

	N	H	P
Connection Bottom	NWT or Flanged	HWT or Flanged	PWT or Flanged
Minimum ID (packer deflated)	79 mm	100 mm	125 mm
Split Guide ID (wear guide ID)	75 mm	95 mm	120 mm
Pressure Rating (inflated against drill string)	900 psi (N), 500 psi (B)	900 psi (H), 500 psi (N)	900 psi (P), 500 psi (H)
Weight	20 kg (NWT) 55 kg (Flanged)	29 kg (NWT) 63 kg (Flanged)	43 kg (NWT) 80 kg (Flanged)
Max. Temperature	150 °C	150 °C	150 °C

\* For parameters outside of the specified above please contact your nearest IPI Packers representative

